

# Emergency Support Function (ESF) #4 Firefighting

## Primary Agency/ESF Coordinator

City of Rolla Fire Department

## Support Agencies:

City of Rolla Public Works  
Phelps County Sheriff's Office  
City of Rolla Police Department  
Mo S&T Police Department  
Phelps Health  
Missouri State Highway Patrol  
American Red Cross  
Task Force 1  
USAR- Columbia

## I. PURPOSE

Emergency Support Function (ESF) #4 Firefighting provides local support for the detection and suppression of fires resulting from, or occurring coincidentally with, an incident requiring a coordinated response for assistance.

The functions of the Hazardous Materials Emergency Response fall under the auspices of the fire departments/districts and are more clearly defined in ESF #10 Oil and Hazardous Materials Response.

The search and rescue functions also fall under the auspices of the local fire departments/districts and are accomplished with their support. The specific duties of that function as it relates to ESF #4 can be found in ESF #9 Search and Rescue.

## II. SCOPE

ESF #4 manages and coordinates firefighting activities, including the detection and suppression of fires and provides personnel, equipment, and supplies in support of local agencies involved in firefighting operations.

Specifically, ESF #4 Firefighting addresses, but is not limited to:

- Support to wildland, rural, and urban fire suppression and mitigation operations
- Incident management structures
- Resource augmentation, such as mutual aid

### **III. SITUATION AND PLANNING ASSUMPTIONS**

#### **A. Situation**

1. The City of Rolla is served by the following fire departments/districts. For a complete list of these departments and their resources can be found in WEBEOC. They are all dispatched through the Central Communications 9-1-1 Center.
  - a. City of Rolla Fire & Recue
  - b. Rolla Rural Fire Protection District
  - c. St. James Fire Protection District
  - d. Doolittle Fire Protection District
  - e. Vichy Fire Protection District
  - f. Edgar Springs Fire Protection District
2. These fire services maintain mutual aid agreements between one another, as well as, with surrounding services outside the County. They concur with the Statewide Fire Mutual Aid System.
3. Fire services provide search and rescue operations in Phelps County, with support from the local law enforcement agencies, the Missouri State Highway Patrol, and the U.S. Coast Guard (see ESF #9 Search and Rescue).
4. In addition to fire suppression, the fire services are trained in hazardous materials response (see ESF #10 Oil and Hazardous Materials Response), provide weather spotting, and assist the ambulance service as first responders.

#### **B. Planning Assumptions**

1. The City of Rolla Fire & Rescue Department will maintain the equipment and level of training necessary to perform emergency firefighting functions.
2. Firefighting resources may be severely limited in a major disaster and will be assigned on a priority basis.
3. For efficient and effective fire suppression, mutual aid may be required from various local firefighting agencies. This requires the use of the Unified Command System together with compatible equipment and communications.
4. State and Federal firefighting resources will respond when called upon, but their ability to react quickly may be limited.

### **IV. CONCEPT OF OPERATIONS**

## **A. General**

1. Close coordination will be maintained with state and federal officials to determine potential emergency support needs and the most expeditious means of acquiring that support. The National Incident Management Systems (NIMS) and the Unified Command System will be used to manage the incident and to ensure coordination and communication among all levels of the government.
2. The City of Rolla is at risk from several hazards with the potential to create a need to activate ESF #4. Activation of ESF #4 may result from or occur coincidentally with another emergency event. For more information on potential hazards, see the Region I Hazard Mitigation Plan.
3. The City of Rolla Fire & Rescue Department has equipment and personnel available to support emergency firefighting operations. The City of Rolla Fire & Rescue Department maintains both equipment and personnel resource lists that may be accessed from the Emergency Operations Center (EOC). Additionally, surrounding cities and counties have fire departments with equipment and resources available to support emergency firefighting operations in City of Rolla.
4. The City of Rolla Fire & Rescue Department trains their personnel in the Incident Command System (ICS) and the National Incident Management System (NIMS) to help ensure coordination during emergency situations.
5. Tactical firefighting operations will be controlled by the Incident Commander(s) at the scene(s) using the ICS structure. The Incident Commander(s) will assess the need for additional resources and request that the EOC deploy assets to support field operations.
6. Outside firefighting resources will be controlled by the procedures outlined in mutual aid agreements. These agencies will remain under the direct control of the sponsoring agency, but will be assigned by the Incident Commander and/or the EOC to respond as necessary.
7. The County/City Emergency Operations Center (EOC) will serve as the central location for interagency coordination and executive decision-making, including all activities associated with ESF #4.

## **B. Actions by Operational Timeframe**

### **1. Preparedness**

- a. Maintain this ESF Annex as well as supporting operating procedures and guidelines.
- b. Ensure fire personnel receive appropriate emergency operations

- training.
- c. Ensure fire mutual aid agreements with surrounding jurisdictions are current.
- d. Develop and maintain mutual aid agreements with private area resources that could be useful for fire prevention or suppression.
- e. Develop and maintain standard operating guides, policies and checklists to support emergency firefighting operations.
- f. Ensure emergency call-up and resource lists are current.
- g. Ensure the availability of necessary equipment to support firefighting activities.
- h. Participate in emergency training and exercises.

## **2. Response**

- a. Respond as required on a priority basis.
- b. Activate mutual aid if needed.
- c. Coordinate activities with other responding agencies.
- d. Coordinate outside fire resources.
- e. Alert or activate off-duty and auxiliary personnel as required by the emergency.
- f. Conduct other specific response actions as dictated by the situation.

## **3. Recovery**

- a. Support clean up and restoration activities.
- b. Review plans and procedures with key personnel and make revisions and changes.
- c. Replenish supplies and repair damaged equipment.
- d. Continue all activities in coordination with the EOC based on the requirements of the incident.
- e. Participate in after-action briefings and develop after-action reports.
- f. Make necessary changes in this ESF Annex and supporting plans and procedures.

## **4. Mitigation**

Participate in hazard identification process and identify and correct vulnerabilities in the firefighting function.

# **V. ROLES AND RESPONSIBILITIES**

## **A. Primary Agency/ESF Coordinator** City of Rolla Fire & Rescue Department

- 1. Reports to the EOC upon being notified.
- 2. Establishes communication links with support agencies and regional ESF #4 coordinators.
- 3. Obtains an initial fire situation and damage assessment through

- established intelligence procedures.
4. Determines the appropriate management response to meet the request for assistance.
  5. Obtains and distributes, through appropriate channels, incident contact information to emergency responders mobilized through ESF #4.
  6. Analyzes each request before committing people and other resources.
  7. Ensures employees will be provided with appropriate vaccinations, credentials, and personal protective equipment to operate in the all-hazard environment to which they are assigned.
  8. Ensures that all employees involved in all-hazard response will be supported and managed by an agency leader, agency liaison, or interagency Incident Management Team.
  9. Ensures that an all-hazard incident-specific briefing and training are accomplished prior to task implementation.
  10. Obtains, maintains, and provides incident situation and damage assessment information through established procedures.
  11. Coordinates incident resource needs and determines and resolves, as necessary, issues regarding resource shortages and resource ordering issues.
  12. Maintains a complete log of actions taken, resource orders, records, and reports.
  13. ESF #4 continuously acquires and assesses information on the incident and continues to identify the nature and extent of problems and establishes appropriate response missions.
  14. Provides subject-matter experts/expertise regarding structural/urban/suburban fire and fire-related activities.
  15. Assist in the dissemination of warning to the public (provide weather spotting, mobile public address systems, social media and storm sirens).

**B. Support Agencies**

1. Phelps County Sheriff's Office, City of Rolla Police Department  
Assist with traffic control and security at the fire scene(s).
2. County/City Public Works Department
  - a. Provide resources and personnel to support emergency firefighting operations.
  - b. Work to ensure the availability of adequate water pressure to support firefighting activities.

**VI. CONTINUITY OF GOVERNMENT**

Lines of Succession for ESF #4 Firefighting:

1. Fire Chief, City of Rolla Fire & Rescue Fire Department
2. Assistant Fire Chief

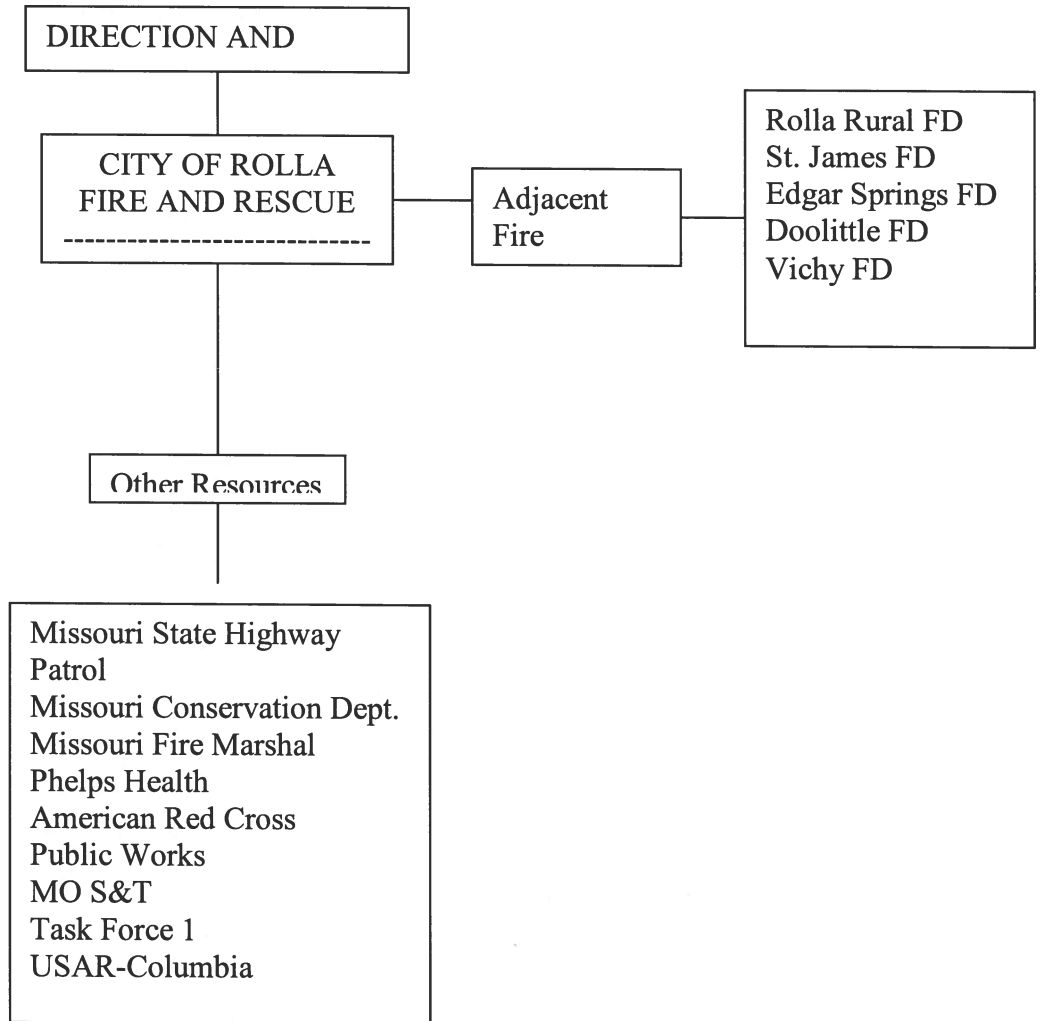
### 3. Captain

#### **Suggested Appendices**

Appendix 1 – City of Rolla Fire & Rescue Department Resources  
Appendix 2 -- Aircraft Down

Appendix 1

**FIRE AND RESCUE DIAGRAM**



Appendix 2  
Aircraft down SOG

I. SITUATION

Rolla, Missouri, is located next to the Rolla Downtown Airport and approximately 11 miles south of the Rolla National Airport at Vichy in Maries County. There are several small privately owned airfields located near Rolla.

II. ASSUMPTION

Rolla may be the location of a downed aircraft incident at anytime.

III. EXECUTION

The City of Rolla Fire & Rescue Department will coordinate emergency operations utilizing available city resources to save lives, protect property, and restore order in the event of a downed aircraft incident.

IV. TASKS

On receipt of a report of a downed aircraft the:

A. Communications Center

1. Dispatch personnel and equipment from the Police Department to secure the area and initiate human rescue operations.
2. Dispatch Fire Department personnel and equipment to suppress fire, determine if hazardous materials are involved, and assist with human rescue operations.
3. Contact the Public Works Department to furnish personnel, equipment, and other resources that may be required. Public Works personnel will assist the Police Department with traffic control and human rescue operations.
4. Notify Phelps Health to dispatch ambulances and to place their disaster plans into operations.
5. Contact the following:
  - a. Police Chief
  - b. Fire Chief
  - c. Police Major
  - d. Coroner (if fatality is found)
  - e. City Administrator
  - f. Mayor
  - g. Airport Manager
6. Private contractors will be alerted to a stand-by basis.
7. Notify the Federal Aviation Administration:
  - a. Location and time of crash
  - b. Type of aircraft
  - c. Any identification markings



- d. Military or civilian aircraft
- e. Whereabouts and condition of crew and passengers
- f. Name and number of persons to contact for further information

B. The Police Department

1. Proceed to the crash site, establish security, provide traffic control, and ascertain where barricades or other traffic control equipment is needed.
2. Request the Mobile Command Post, if needed, and direct all supporting forces deployed.
3. Initiate rescue operations.
4. Provide security at the area where injured are taken.
5. Provide the Public Information Officer, who will be responsible for all major news releases, necessary information.
6. In coordination with the Fire and Public Works Departments, carry out any required evacuation.
7. Assist medical personnel with the injured and fatalities.
8. Alert and/or recall off-duty personnel.
9. Provide access and egress routes for rescue and emergency personnel.

C. Fire Department

1. Proceed to the crash site with personnel and equipment needed to suppress fires and contain any hazardous materials involved.
2. Assist Police Department with human rescue operations.
3. Coordinate evacuation, if needed.
4. Assist medical personnel with injured and fatalities.
5. Alert and/or recall off-duty personnel.
6. Provide flood lighting, flares, rope, and related equipment as needed.

D. Public Works Department

1. Provide personnel to assist with traffic control.
2. Provide personnel to assist with human rescue operations.
3. Provide barricades and other traffic control equipment as needed.
4. Clear debris from streets, etc. to keep routes clear for emergency personnel and equipment.
5. Assist Police and Fire Departments with evacuation.
6. Alert and/or recall off-duty personnel.

E. Park Department

1. Provide personnel and equipment to support the Public Works Department with clearing of debris, opening emergency routes, etc.
2. Assist Police Department with traffic control.
3. Alert and/or recall off-duty personnel.
4. Support the Police and Fire Departments with evacuation and human rescue.

F. Administration and Logistics

1. Normal administration and supply channels will be utilized by city departments.
2. Every effort will be made to use government resources before any supplies or resources are requested that involve a financial obligation on the part of the city.
3. Creation of a financial obligation by a department must be approved by the City Manager or his designated representative.

G. Purchasing Department

The Purchasing Agent shall be prepared to expedite emergency purchases.

H. Personnel Department

The Personnel Director shall be prepared to provide additional manpower when required.

I. American Red Cross

The American Red Cross through the American Red Cross has responsibility for providing emergency services for all types of disasters.

1. Food for victims.
2. Temporary shelter.
3. Clothing for victims.