

Emergency Support Function (ESF) #1 Transportation

Primary Agency/ESF Coordinator

City of Rolla Public Works Department

Support Agencies:

City of Rolla Police Department

I. PURPOSE

Emergency Support Function (ESF) #1 Transportation assists with the management of transportation systems and infrastructure following a disaster or emergency.

II. SCOPE

Assistance provided by ESF #1 includes, but is not limited to:

- Transportation modes management and control
- Transportation safety
- Stabilization and reestablishment of transportation infrastructure
- Movement restrictions
- Damage and impact assessment

ESF #1 is not responsible for the movement of goods, equipment, animals, or people.

III. SITUATION AND PLANNING ASSUMPTIONS

A. **Situation**

1. The Phelps County Hazard Mitigation Plan identifies many hazards with potential to cause damage to transportation systems and infrastructure.
2. Transportation modes addressed in ESF #1 include: ground, air, rail, and waterways.
3. The following transportation systems are located in the City of Rolla:
 - a. Airports:
 - b. Interstate Highways:
 - c. US Highways:
 - d. State Highways:
 - e. County Roadways:
 - f. City Streets:

g. Railroads:

B. Planning Assumptions

1. A disaster may severely damage the transportation infrastructure and interrupt transportation services. Most localized transportation activities may be hampered by lack of surface transportation infrastructure.
2. First responders will rely on transportation routes to deploy resources and personnel to perform critical emergency functions. The lack of these resources may seriously hamper response efforts.
3. The damage to the transportation infrastructure may influence the means and accessibility level for relief services and supplies.
4. Disaster responses, which require transportation routes, will be difficult to coordinate effectively during the immediate post-disaster period.
5. Clearing of access routes will permit a sustained flow of emergency relief, although localized distribution patterns may be disrupted for a significant period.
6. There may be a need to utilize private transportation resources in addition to existing county and city resources.

IV. CONCEPT OF OPERATIONS

A. General

1. ESF #1 Transportation is organized consistent with the requirements of the National Incident Management System (NIMS) and uses the Incident Command System (ICS) to manage its emergency/disaster responsibilities. This structure and system supports incident assessment, planning, procurement, deployment, and coordination of ESF #1 operations for Phelps County, and the City of Rolla.
2. The City of Rolla Emergency Operations Center (EOC) will serve as the central location for interagency coordination and executive decision making including all activities associated with ESF #1.
3. Because of its critical nature, the assessment of damage, and if necessary, the restoration and protection of transportation infrastructure needed to move people and resources will be a priority during emergency operations.
4. Close coordination will be maintained with the Missouri Department of Transportation (MoDOT). MoDOT may provide a liaison and provide information on road closures, alternate routes, infrastructure damage, debris removal, as well as, designate and maintain emergency transportation corridors.
5. Traffic management and coordination on non-state and non-federal highways resides with the county government, in coordination with the respective

municipality. This includes establishing traffic control measures, barricade placements, coordination of road closures, and establishing alternate (detour) routes for local roadways.

6. All requests for temporary flight, maritime, and rail restrictions will be coordinated through ESF #1. ESF #1 will coordinate temporary restrictions through the most appropriate support agency.

B. Actions by Operational Timeframe

1. Preparedness

- a. Maintain awareness of the transportation related systems and infrastructure.
- b. Develop mutual aid and other support agreements with surrounding jurisdictions and the private sector.
- c. Ensure personnel are trained in EOC operations, the incident Command System (ICS) and the National Incident Management System (NIMS).
- d. Develop plans to use available transportation systems to manage the immediate transport of critical supplies.
- e. Participate in training, drills, and other activities to improve interagency communications.
- f. Review departmental Standard Operating Procedures and maintain personnel call up lists.
- g. Participate in Emergency Management training and exercises.

2. Response

- a. Ensure damage assessments are performed on infrastructure and transportation systems, facilities, and equipment.
- b. Coordinate with other response agencies regarding the operational capabilities of the transportation system.
- c. Assist in making decisions regarding closures, restrictions, and priority repairs to transportation routes.
- d. Assist in initiating traffic management operations and control strategies.
- e. Provide field support for emergency responders at the scene integrated through the Incident Command System (ICS).

3. Recovery

- a. Continue to perform tasks necessary to expedite restoration and recovery operations.
- b. Gradually revert assignments and personnel requirements to normal.
- c. Return borrowed resources and those obtained through agreement, lease, or rental when those resources are no longer required.
- d. Evaluate response and make necessary changes in this ESF Annex to correct shortfalls and improve future response activities.

- e. Participate in after action meetings and prepare after action reports as requested.

4. Mitigation

- a. Coordinate the development of transportation plans to help ensure critical emergency routes can be maintained.
- b. Work to identify and correct potential shortfalls in the ability to use emergency access and egress routes.

V. ROLES AND RESPONSIBILITIES

A. Primary Agency/ESF Coordinator

City of Rolla Public Works Department

- 1. Assign a representative to support EOC operations and coordinate ESF #1 activities.
- 2. Assess the condition of and damage to transportation systems and infrastructure.
- 3. Close infrastructure determined to be unsafe.
- 4. Post signs and barricades.
- 5. Coordinate the restoration and recovery of the transportation infrastructure.
- 6. Identify critical routes and bridges for primary response activities.
- 7. Coordinate traffic flow, detour patterns and detours, and provide that information to the media.

B. Support Agencies

City of Rolla Police Department

Assist with the restoration of traffic movement and control associated with the road system.

VI. CONTINUITY OF GOVERNMENT

Lines of Succession for ESF #1 Transportation:

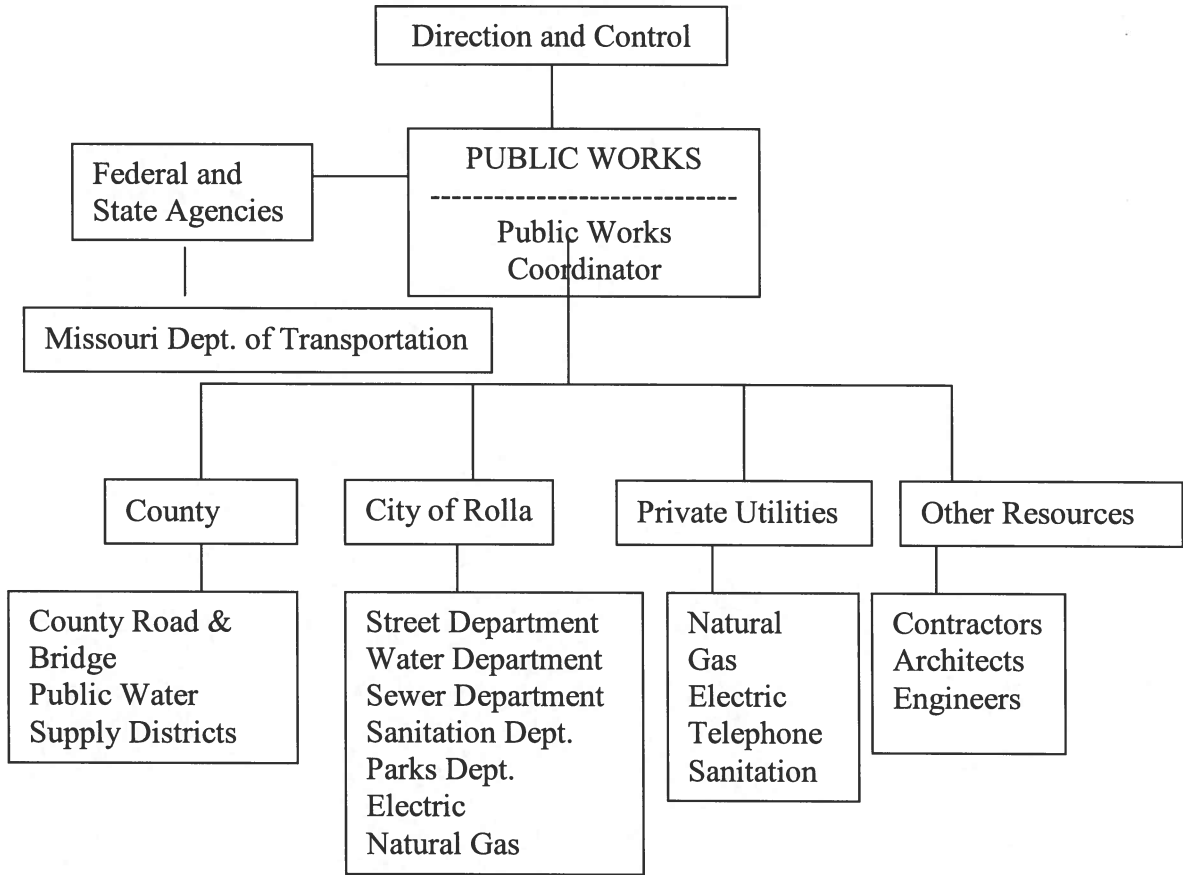
- 1. Director, City of Rolla Public Works Department
- 2.
- 3.

Suggested Appendices:

Appendix 1 – * _____ * County/City Transportation Resources
Appendix 2 – * _____ * County Road District Offices

Appendix 1 to Annex I

PUBLIC WORKS DIAGRAM



Appendix 2 to Annex I

PUBLIC WORKS RESOURCES

A. Rolla Public Works Services

| | |
|--|----------|
| Rolla Municipal Utilities (water & electricity)..... | 364-1572 |
| Sewer..... | 364-8659 |
| Streets..... | 364-8659 |
| Parks & Recreation | 364-4278 |
| Sanitation..... | 364-6693 |

B. Phelps County Road and Bridge Department

1. Districts - The County Road and Bridge Department is divided into two districts: First District and Second District. These Districts are responsible for maintaining the roads and bridges in the unincorporated areas of Phelps County.

| | |
|----------------------|----------|
| First District | 364-3864 |
| Second District..... | 435-9228 |

2. Equipment - Each Road and Bridge district has a maintenance shed. All public works equipment is kept at these two locations. An equipment inventory is kept on file with each district as well as with the County Clerk's Office.

3. Communications - Most all the public works vehicles are radio equipped. A radio base station is located at each maintenance shed.

4. Personnel - Call-up procedures will be as discussed in Appendix 3 to the Basic Plan and Appendix 2 to Annex A.

C. Public Water Supply Districts (PWSD)

| | |
|---|----------|
| Phelps County Rural Water Supply District No. 1 | 435-6720 |
| Phelps County Rural Water Supply District No. 2 | 364-8790 |
| Phelps County Rural Water Supply District No. 4 | 364-1660 |

D. St. James Public Works Services

| | |
|---|----------|
| Municipal Utilities | 265-7011 |
| Water/Sewer Office, 200 N. Bourbeuse | 265-7013 |
| Sewage Treatment Plant, W. Springfield..... | 265-3865 |
| Streets/Sanitation, E. Springfield..... | 265-8713 |
| Parks & Recreation, W. Springfield | 265-6939 |

E. Newburg Public Works Services - 2nd & Main..... 762-2315
Water/Sewer
Streets

- F. Doolittle Public Works Services - 380 Eisenhower..... 762-2601
 Water/Sewer
 Streets
- G. Edgar Spring Public Works Services - 555 Broadway 435-6334
 Water/Sewer
 Streets
- H. Electric
1. City of Rolla Municipal Utilities 364-1572
 2. AmerenUE
 Customer Service 800-552-7583
 3. Intercounty Electric..... 368-3010
 4. Show-Me Power Corp..... 417-468-2615
 5. Gascosage Electric 759-7146
- I. Telephone
1. Verizon..... 1-800-483-3737
 2. Sprint..... 341-0420
 3. Southwestern Bell 364-4617
 4. McLeod USA 1-800-333-4059
 5. AT & T..... 1-800-222-3000
 6. Fidelity Communications..... 426-5000
 7. Century Tel 1-800-824-2877
- J. Sanitation Services (Trash Hauling)
1. City of Rolla Sanitation 364-6693
 2. Lane Sanitation 759-2626
 3. City of St. James Streets/Sanitation, E. Springfield..... 265-8713
 4. Waste Corporation of America - Rolla 762-2149
 5. County Trash Service - Rolla..... 341-2190

Appendix 3 to Annex I

SOG FOR EMERGENCY REPAIRS

- A. The public works organization will have its own specialized priorities for emergency repairs. Part B below consists of general guidelines for such repairs following a disaster.

- B. Guidelines:
 - 1. Clear debris and make repairs to roads and bridges that are impeding rescue crews and equipment (lifesaving).
 - 2. Restore services to critical and essential facilities (EOC, nursing homes, hospital, temporary shelters, etc.).
 - 3. Repair roads and bridges which have isolated people.
 - 4. Restore services to schools and businesses.
 - 5. Make any necessary repairs to expedite recovery.

- C. **THESE ARE JUST GENERAL GUIDELINES. EACH DISASTER WILL HAVE A DIFFERENT SET OF CIRCUMSTANCES SO EACH PROBLEM MUST BE CONSIDERED ON A CASE-BY-CASE BASIS AND PRIORITIES ESTABLISHED AT THAT TIME.**