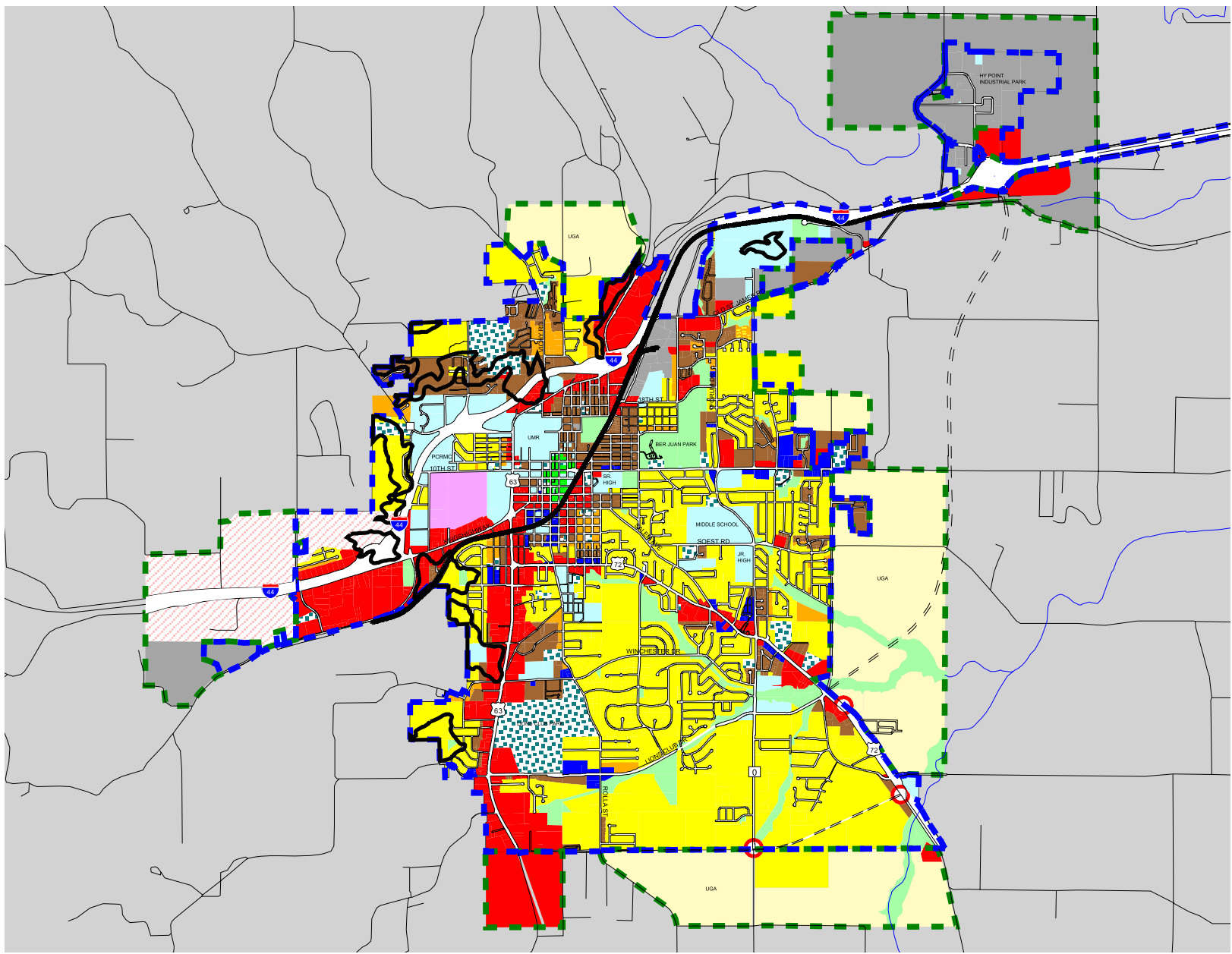
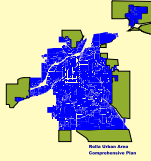


FUTURE LAND USE



Residential

- Low Density Residential
- Low/Medium Density Residential
- Medium/High Density Residential
- Rural Residential

Commercial

- Commercial/Res Mixed Use
- Community Commercial
- Neighborhood Commercial
- Center City
- Future Commercial Activity Center

Industrial/Office

- Industrial
- Office/Research Park

Public/Institutional

- Public/Institutional
- Semi-Public/Church
- Parks & Open Space

- 35% Slope
- City Limits
- Urban Growth Area
- Future Roadway

This map was developed by the Community Development Department and prepared by the Department of Public Works, GIS Mapping Division. Map revision date: September 28, 2005

