

ANNEX M

HEALTH AND MEDICAL

I. PURPOSE

This annex establishes an organization and procedures to provide needed health and medical services following a disaster of any type.

II. SITUATION AND ASSUMPTIONS

A. Situation

1. There is one hospital located in Rolla - Phelps County Regional Medical Center (see Appendix 2 to this Annex). The hospital has developed emergency plans in accordance with state and federal regulations. Such plans are tested and exercised regularly.
2. There are also a number of medical facilities in the counties and cities surrounding the city of Rolla. Major hospitals and trauma centers are located in Jefferson City, Columbia, Springfield and St. Louis that could augment health and medical activities in Rolla (see Appendix 2 to this Annex).
3. Public health for Rolla is the responsibility of the Phelps-Maries County Health Department located in Rolla. They deal with problems such as communicable disease, environmental sanitation problems, contamination of food and water, and other health matters. Phelps County is supported by Missouri Department of Health and Senior Services (DHSS) and Center for Emergency Response and Terrorism (CERT).
4. Ambulance service for Rolla is provided by the Phelps County Regional Medical Center and the St. James Ambulance District. Dispatching is provided through the Central 911 Dispatch Center in Rolla. There are a number of ambulance services in the counties and cities surrounding Rolla that can support emergency capabilities in a major incident. Verbal and in some cases written mutual aid agreements are available between the ambulance services and hospitals surrounding Rolla. The ambulance service is responsible for the on-site triage and patient transport
5. The Phelps County Coroner operates from the Phelps County Regional Medical Center in Rolla. The Missouri Funeral Directors Association maintains a regional disaster operations plan (see Appendix 3 to this Annex).
6. Many of the fire department personnel are trained as first responders, EMTs and paramedics to assist the ambulance service.

7. Each of the health and medical services keeps an internal notification/call-up list for emergencies.
 8. Other individuals and agencies, such as the Division of Family Services, local physicians, the American Red Cross and other volunteer organizations may be available to lend assistance in a major medical emergency.
- B. Assumptions
1. A major disaster will create medical problems beyond the normal day-to-day capabilities of the medical system.
 2. Outside assistance is available and will respond when needed.

III. CONCEPT OF OPERATIONS

NOTE: The time frame for performing these actions is listed in parentheses.

- A. First responder emergency medical care will be supplied by the ambulance service in most cases and support, if needed, will come from the City/Rural Fire Departments/Districts or the law enforcement services. (RESPONSE)
- B. All medical units responding to an emergency call will be dispatched as described above in the Situation and Assumptions section. If the magnitude of the emergency increases, the dispatching of emergency vehicles would be coordinated through the EOC of the affected area (see Annex A, Direction & Control). (RESPONSE)
- C. Requests for outside medical assistance need not go through the EOC (unless it is to the state or federal government) but should be reported to the EOC immediately after they are made. The local hospital and health department will maintain control over their internal operations. (RESPONSE)
- D. If evacuation becomes necessary, the patients/residents in the nursing homes and other health care facilities must be moved (see Annex J, Section III-G). Medical care will be continued for those that cannot be evacuated. (RESPONSE)
- E. Emergency clinics will be set up and operated if necessary. These facilities can provide medical services for essential workers in the hazardous area following the evacuation of the general population. (RESPONSE)
- F. Immediately following the initial emergency medical care, public health and mortuary services will have the priority on resources. (RESPONSE)
- G. Appropriate health and medical information will be reported to the EOC (casualties, damage observations, evacuation status of health facilities, chemical exposure, etc.). (RESPONSE)

- H. In the event of a hazardous materials incident, the health and medical services will assist the Incident Commander or the EOC staff as needed. It is recommended that health and medical personnel receive, at a minimum, awareness level hazardous materials training. See Annex H for additional information. (PREPAREDNESS and RESPONSE)
- I. City of Rolla will use the Rolla HAZMAT Team in decontaminating injured individuals that have been radiologically or chemically contaminated. Injured individuals would be transported to the appropriate medical facility. (RESPONSE)
- J. Identification and control of communicable disease is the responsibility of the Phelps/Maries County Health Department. The Health Department maintains a passive and active surveillance system. The Phelps County Health Department (PCHD) communicates disease rates on a routine basis to the region and state. In the event of a suspected bioterrorism event or an excessive rate of disease, the Health Department will additionally notify Center for Emergency Response and Terrorism (CERT) as well as increase active surveillance with all providing entities. (RESPONSE)
- K. PCHD will make contact with the Center for Emergency Response and Terrorism (24-hour phone number 800-392-0272) under the Department of Health and Senior Services upon suspicion that a bioterrorism event may be occurring to request guidance and assistance in formulating the proper local public health response. (RESPONSE)
 - 1. The LPHA and CERT will discuss when and who should contact the bioterrorism FBI Special Agent (314-231-4324).
 - 2. The LPHA will discuss with CERT how any patient specimens or evidentiary samples will be transported to the DHSS State Lab in Jefferson City in accordance with the MOU between the FBI and DHSS dated October 28th, 1999.

IV. ORGANIZATION AND ASSIGNMENT OF RESPONSIBILITIES

A. Organization

A diagram of the health and medical function is shown in Appendix 1 to this Annex.

B. Responsibilities

- 1. Coordination of the Health and Medical services for the City of Rolla will be the responsibility of the Phelps County Regional Medical Center for acute care and the Phelps County Health Department for communicable disease outbreaks. The line of succession for the Phelps County Health Department is Administrator, Environmental Public Health Supervisor, and Administrative Supervisor. The line of succession for the Phelps County Regional Medical Center is the CEO, Administrator on Call/Nursing Supervisor. Specific tasks include:
 - a. Acute patient care will be the responsibility of the Phelps County Regional Medical Center (or the receiving hospital). Identification and pre-acute-phase treatment of communicable disease is the responsibility

of the Phelps County Health Department.

- b. Develop/maintain SOGs to deal with projected health and medical requirements.
- c. Train health and medical personnel and volunteer augmentees in special procedures (i.e., decontamination).
- d. Establish contact with hospitals and health departments in neighboring cities and counties. Participate in exercises.
- e. Identify medical facilities that have the capability to decontaminate injured individuals that have been radiologically or chemically contaminated (see Annex H).
- f. Review plans for the treatment, to include vaccination and medication, of individuals to prevent the spread of disease. Provide for the distribution of antidotes, drugs, vaccines, etc., if necessary.
- g. Locate and contact storage places of public health supplies to augment and/or satisfy expanded medical needs.
- h. Identify clinics, nursing homes, and other facilities (i.e., school gyms) that could be expanded into emergency treatment centers for disaster victims (see Appendix 2 to Annex J).
- i. Provide for public health services after the disaster (i.e, in reception centers, public shelters, and at the disaster scene).
- j. Identify personnel that can augment health and medical services such as nurses aides, paramedics, Red Cross personnel, and other trained volunteers.
- k. Develop procedures to track patients through the healthcare delivery system (i.e., hospital, clinic, shelter, etc.).
- l. Provide public health information to the City PIO for dissemination to the public.
- m. Develop/maintain mutual aid agreements with local health and medical services to insure proper coordination.

2. The Phelps County Coroner will be responsible for the following:

- a. Develop/maintain emergency mortuary plans and procedures. Coordinate with the Missouri Funeral Directors Association (see Appendix 3 to this Annex).

- b. Provide list of deceased.
 - c. In the event death is caused by a communicable disease, the Phelps County Coroner will consult with the Phelps/Maries County Health Department for management of the remains.
- 3. The Administrator of the Phelps-Maries County Health Department will be responsible for public health matters, to include health education.
- 4. The ambulance services will be responsible for:
 - a. initial triage (establish/maintain triage coding system)
 - b. emergency medical treatment
 - c. patient transport.
- 5. Fire department/district personnel will assist the ambulance services as first responders.
- 6. The Ministerial Alliances, Red Cross, Salvation Army, etc., will assist with mental health support, including crisis counseling, to disaster victims, emergency response personnel, and volunteers.
- 7. Medical supplies will be the responsibility of the responding agency. The Resource and Supply Coordinator will provide support as needed (see Annex G).

V. DIRECTION AND CONTROL

- A. Coordination of health and medical operations will occur at the EOC, if activated. The Health and Medical Coordinator, hospital administrator for acute care requirements and Health Department administrator for communicable disease outbreak, are members of the EOC staff. Each operating agency/organization mentioned above will provide a representative at the EOC to coordinate their activities.
- B. The EOC will not interfere with the internal operations of the area hospital or health department, but will provide support as required.
- C. Decisions to evacuate nursing homes and other health care facilities will be made by the institution staff. The EOC will provide support.

VI. CONTINUITY OF GOVERNMENT

- A. Line of Succession - Health and Medical Coordinator

1. City of Rolla
 - a. Administrator, Phelps County Regional Medical Center
 - b. Director, Phelps County Department of Health & Senior Services
- B. The line of succession for each operating health and medical agency/organization will be as explained in departmental SOGs.

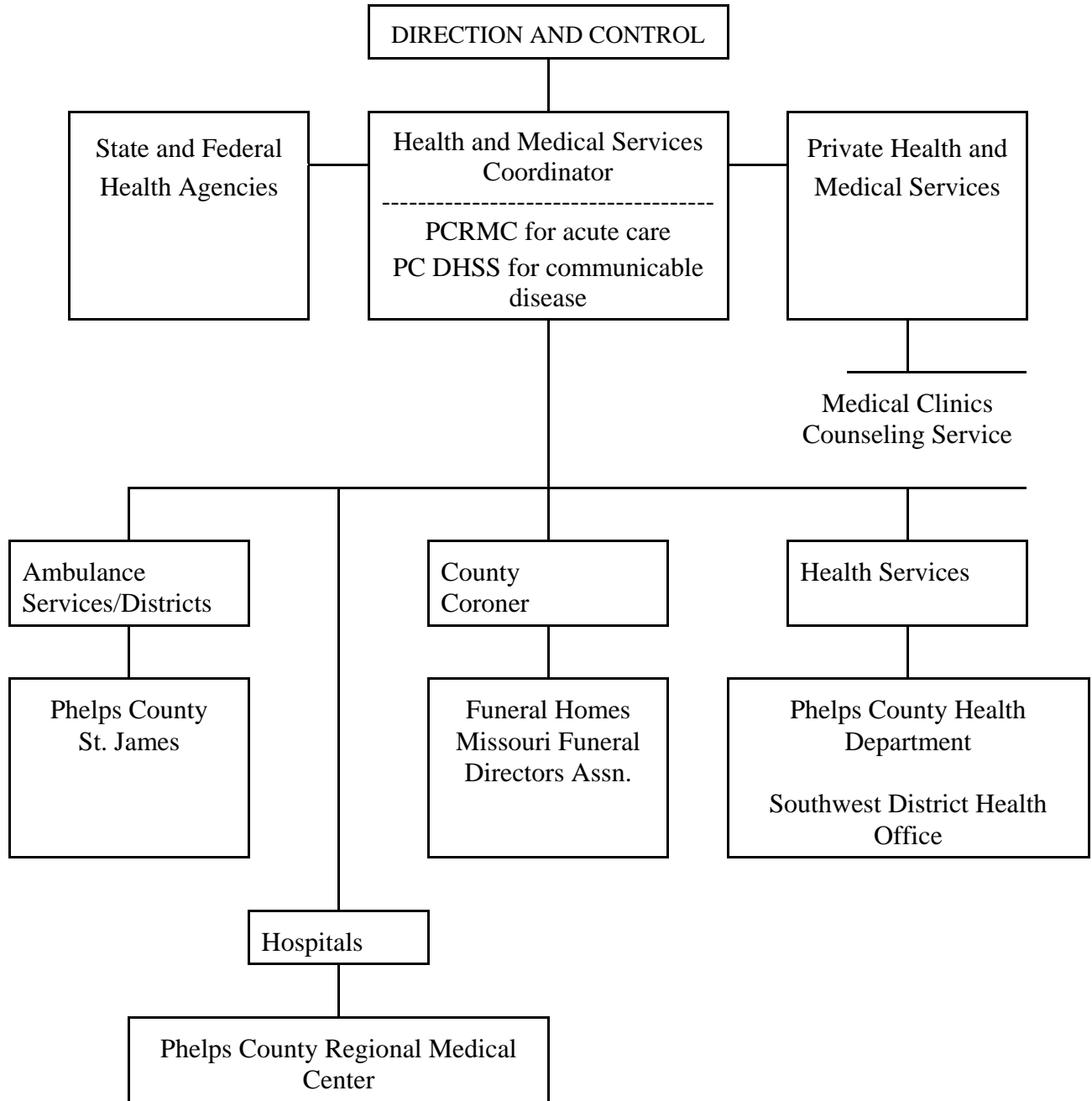
VII. ADMINISTRATION AND LOGISTICS

- A. Health and medical statistics will become very important during emergency periods. Some statistics that should be kept and reported to the EOC are:
 1. deaths
 2. injuries
 3. prophylaxis and vaccinations given
 4. blood supply
 5. incidence of disease
- B. Records of hours worked and materials used must be reported to the EOC for use in determining the total cost of the incident/disaster.
- C. Supply requisitions will be made through normal channels as much as possible, but will be made through the EOC when necessary.

APPENDICES

1. Health and Medical Diagram
2. Area Health and Medical Services
 - Attachment A – Outside Medical Support
 - Attachment B – American Red Cross SOG
3. Phelps County Emergency Mortuary SOG
4. Medication Dispensing Sites
5. Ambulance District Mutual Aid Agreements

HEALTH AND MEDICAL DIAGRAM



Appendix 2 to Annex M

AREA HEALTH AND MEDICAL SERVICES

A. Hospitals

Phelps County Regional Medical Center
1000 W. 10th St., Rolla.....573-364-3100
Beds: 232 or 573-364-8899

B. Ambulance Services

1. Phelps County Regional Medical Center
1000 W. 10th St., Rolla..... Business: 573-364-2886
Emergency: 911

Personnel: 17 Paramedics, 13 EMTs
Ambulances: 4 ALS units

2. St. James Ambulance District
203 Louise St., St. James Business: 573-265-3229
Emergency: 911

Personnel: Full/part time: 10 Paramedics, 9 EMTs
Ambulances: 2 ALS units, 1 BLS unit

C. Health Services

1. Phelps County Health Department573-364-3381
Phelps County Courthouse
200 N. Main, Suite G-51, Rolla

2. Southwest District District Health Office.....417-895-6900
1414 W. Elfindale, PO Box 770 MPO
Springfield, MO 65801

D. Phelps County Coroner

County Coroner, Phelps County Courthouse.....573-364-1869
200 N. Main St., Rolla

E. Mortuary Services/Funeral Homes

Newburg	Teague and Son Funeral Home	242 Main St.	573-762-2090
St. James	James & Gahr Mortuaries	117 Seymour St.	573-265-3232
	Jones Funeral Home	200 S. Meramec St.	573-265-3278
Rolla	James & Gahr Mortuaries	1601 Hwy. 72 E	573-458-2262

Kordes Funeral Home	915 Fairgrounds	573-364-1122
Null & Son Funeral Home	1010 W Kingshighway	573-364-1200

F. Missouri Funeral Directors Association (MFDA)
 1105 Southwest Blvd., Jefferson City573-635-1661

G. Veterinary Hospitals/Clinics/Services

1. Mark Ramey, Rolla.....573-364-5725
2. Brown Veterinary Clinic, Rolla573-364-1919
3. Animal Health Clinic, Rolla573-364-7100
4. Rolla Animal Hospital, Rolla.....573-341-2221
5. Tri-County Humane Society573-265-7955
 745 E. Springfield, St. James

H. Fire Departments

(Additional fire department resources listed in Annex F)

1. Doolittle Rural Fire Department573-762-3474
2. Duke Rural Fire Department.....573-435-6312
3. Edgar Springs Fire Department573-435-1008
4. Newburg Fire Department573-762-2315
5. City of Rolla Fire & Rescue573-364-3989
6. Rolla Rural Fire Protection Association573-341-2211
7. St. James Fire Department573-265-7212

I. Rolla Stress Center.....573-341-2350

Attachment A
Appendix 2 to Annex M

OUTSIDE MEDICAL SUPPORT

Ambulance Districts

North Crawford County Ambulance District (Cuba)	(573) 885-3793
Steelville Ambulance District	(573) 775-2211
Salem Memorial District Hospital Ambulance Service	(573) 729-6626
Iron County Emergency Medical Service (Viburnum)	(573) 244-5966
Ozark Central Ambulance District (Belle)	(573) 859-6678
Owensville Area Ambulance District	(573) 437-4353
Comm-Unity Ambulance District (Meta)	(573) 229-4878
Dixon Ambulance District	(573) 759-7447
Maries/Osage Ambulance District (Vienna)	(573) 422-6123
Osage Ambulance District (Linn)	(573) 897-0044
Pulaski County Ambulance District (Waynesville)	(573) 774-5413
Texas County Memorial Hospital Ambulance (Houston)	(417) 967-3737

Hospitals

Breech Medical Center 325 Harwood Ave. Lebanon, MO 65536 (417) 532-2136	Lake of the Ozarks General Hospital 54 Hospital Drive Osage Beach, MO 65065 (573) 348-8000
--	---

Missouri Baptist Hospital 757 Sappingtin Bridge Rd. Sullivan, MO 63080 (573) 468-4816	Salem Memorial Hospital Hwy. 72 North Salem, MO 65560 (573) 729-6626
--	---

Texas County Memorial Hospital
1333 Sam Houston Blvd.
Houston, MO 65483
(417) 967-3311

Level I Trauma Centers

University of MO Hospital One Hospital Drive Columbia, MO 65212 (573) 882-4141	Barnes-Jewish Hospital Barnes Hospital Plaza St. Louis, MO 63110 (314) 747-3000
---	--

St. Louis Children's Hospital One Children's Place	St. John's Mercy Medical Center 615 New Ballas Road South
---	--

St. Louis, MO 63110
(314) 454-6000

St. Louis, MO 63141
(314) 569-6000

St. Louis University Hospital
3635 Vista at Grand Blvd.
St. Louis, MO 63110
(314) 268-5880

Cardinal-Glennon Children's Hospital
1465 S. Grand Blvd.
St. Louis, MO 63104
(314) 577-5600

Air Ambulance Services

AirEvac Lifeteam
1488 West 8th
West Plains, MO 65775
E: 800-247-3822
B: 417-256-0010

Staff for Life – University of Missouri Columbia
One Hospital Drive
Columbia, MO 65212
E: 573-882-8091
B: 573-882-8091

Cox Air Care
Cox Health Systems
3801 South National
Springfield, MO 65807
E: 800-333-5269
B: 417-269-6584

Hammons Life Line
St. John's Regional Health Center
1235 East Cherokee
Springfield, MO 65804
E: 800-433-5433
B: 417-820-5379

Attachment B
Appendix 2 to Annex M

AMERICAN RED CROSS SOG

I. PURPOSE

The purpose of this annex is to outline the organization of the American Red Cross and define its mission for emergency operations during civil emergencies¹ either through natural disaster or man-made catastrophe.

II. ORGANIZATION

This chapter represents the National Organization within Phelps County and has resources to conduct disaster operations autonomously up to the level of five family emergency needs. Beyond that, the Territorial Field Manager is notified, and a request for national assistance is made as required. Other salaried staff and trained disaster reserves can be readily activated by the national organization as needed in a relatively short time.

III. MISSION

The American Red Cross is the instrument chosen by Congress to carry on a volunteer system of national and international relief, and to prevent and mitigate suffering caused by disasters.

IV. CONCEPT OF OPERATIONS

A. Administration

The American Red Cross traditionally accepts responsibility for assisting disaster victims in the following categories:

1. Welfare inquiries and information services.
2. Emergency assistance covering food, clothing¹ temporary shelter.

B. Supply

Supplies for small-scale disasters are procured by disaster victims at a retailer of their choice, with "Dispersing Orders" written by the chapter. Large scale disasters warrant vast quantities of supplies of all types which are contracted for from wholesalers, retailers, and the United States Government, as required to supplement the "Dispersing Orders" written to individual disaster victims.

V. EXECUTION

A. Transportation

Transportation will not be furnished by the American Red Cross.

B. Written Agreements

In providing disaster relief within our area of responsibility, we have written agreements with the following agencies to supplement our services.

1. Phelps County Regional Home Care
2. Amateur Radio League

C. Community Blood Center

The Community Blood Center, a nationwide blood supply network coordinated by the American Red Cross, is utilized during times of emergency.

PHELPS COUNTY EMERGENCY MORTUARY SOG

CONCEPT OF OPERATIONS:

To establish means and methods for the most reasonable and proper care and handling of the dead in multi-death disaster situations. The Mortuary Disaster Response Team is responsible for aiding the Phelps County Coroner in the recovery, evacuation, identification, sanitation and preservation (such as embalming if necessary), notification of the next of kin and facilitating means for release of the identified dead to the next of kin or their agent.

COMMUNICATION PROCEDURES:

Upon the event of a disaster of any nature, which has caused multiple deaths the following persons should be notified immediately. Preferably in the order shown below but not limited to this order of priority:

- 1. Phelps County Coroner 364-1869
Phelps County Courthouse
200 N. Main St., Rolla

- 2. Phelps County Emergency Management Director..... 364-1818/3860
Phelps County Sheriff's Department
301 West Second St., Rolla

One of the above persons will immediately notify the Certified Disaster Coordinator by contacting the Missouri Funeral Directors Association:

Missouri Funeral Directors Association (MFDA)
1105 Southwest Blvd., Jefferson City 635-1661

This coordinator has been trained at the National Level by the Federal Emergency Management Agency and by the National Funeral Directors Association. This individual will go immediately to the site to lend his expertise and to act as liaison between the Missouri Funeral Directors Disaster Teams and the National Association should the scope of the disaster require supplies or personnel beyond our resources.

The Disaster Coordinator will notify the Missouri State Funeral Directors Association and will from time to time as conditions will permit issue briefings to the M.F.D.A. office with regard to additional supplies and as to progress with the mission.

AUTHORIZATION FOR ADMISSION OF DISASTER WORKERS INTO DISASTER SITE

All disaster workers must have in their possession the necessary identification card or pass, etc., as developed by the Emergency Management Director or responsible official to gain admission into the immediate disaster site area. These workers and members of the Mortuary Disaster Response Team will be required to register their name and address at the EOC or area designated for such purpose.

RECOVERY OPERATIONS GUIDELINES:

1. None of the dead shall be moved or touched by workers until approval has been given by the appropriate Sphere of Control, most usually the County Coroner.
2. Operations will be coordinated by the Coroner and MFDA Disaster Response Team Coordinator.
3. A survey and assessment of the situation will be made by the Coroner and Mortuary Disaster Response Team Coordinator. They will note the approximate number of dead, equipment and personnel needed.
4. Once workers have reported to the scene a briefing will be held, assignments will be given at this time, and workers will be divided into teams if necessary.
5. Photos or a sketch will be made of the disaster site, and if desired the scene will be divided into sections with the recovery teams assigned to particular sections.
6. Suitable stakes or markings will be placed at the location of each body and numbers will be assigned to each body.
7. Bodies will be tagged and records kept noting the location in which the body was found. (This tag numbering system will be developed by the County Coroner.)
8. Personal effects of the dead will be tagged and data recorded noting location found.
9. When necessary, bodies will be placed in a body pouch and a tag with corresponding numbers will be placed on the pouch.
10. Valuables such as wallets, attached jewelry, etc. will not be removed at the disaster site. These will remain on the body.
11. Bodies will be removed from immediate disaster site via litter or stretcher.
12. The major support group for this recovery task will be members of the MFDA Disaster Response Team.

BODY EVACUATION OPERATIONAL GUIDELINES:

1. Evacuation operations will be coordinated by the Coroner and the MFDA Disaster Response Team Coordinator.

2. A survey and assessment of the situation will be made by the Coroner and Mortuary Disaster Response Team Coordinator. They will note the approximate number of dead, type of terrain, necessary personnel and equipment needed.
3. Before operations begin, a briefing will be held, assignments given and teams formed if desired.
4. Bodies will be covered when transported.
5. All vehicles used for transport will be covered except when not possible.
6. Vehicles should travel the same route from disaster site to morgue site. This route will be established in coordination with local traffic control agencies.
7. Vehicles should travel at a moderate pace and in convoy style.
8. Records will be kept noting vehicle ID and body tag number, as well as driver ID.
9. Evacuation teams will take care not to overload the morgue site with incoming bodies.
10. The major support group for this task will be the MFDA Disaster Response Team.

MORGUE SITE:

1. A list of possible morgue sites will be maintained for use in the event of a disaster.
2. Once a morgue site has been selected the Coroner and the MFDA Disaster Response Team Coordinator will organize its operations and assign personnel to some or all of the following job titles:

(Uniformed Guards, information clerks, counselors, interviewers, telephone communicators, admissions clerk, general supervisor, ID personnel, orderlies, personal effects custodian, embalming supervisor, embalmers, secretaries, inventory clerk, distribution clerk, etc.)
3. The morgue site will be used for the storage, identification, sanitation, preservation if desired, as well as the distribution point for release of the dead to their next of kin or their agent.
4. Refrigeration units will be utilized as necessary.
5. Bodies admitted to the morgue will be logged and necessary information gathered and recorded about each body.
6. Personal effects will be recorded and placed in a secure area.

7. Should embalming be necessary the Coroner will rely on the MFDA Disaster Response Team to organize the operations, equipment, supplies, and personnel needed.
8. An area will be designated for the press.
9. Counselors such as members of the clergy will be present in waiting areas to assist persons visiting the morgue.

IDENTIFICATION OF THE DEAD:

The Coroner will arrange for the necessary equipment and staff to accomplish this task. The members of the MFDA Disaster Response Team will be at his/her disposal to be of assistance where needed.

NOTIFICATION OF NEXT OF KIN:

The Coroner, with the assistance of the MFDA Disaster Response Team, will determine the most practical method to be utilized in contacting the next of kin. Every effort will be made to lessen the extreme psychological impact on the families of those dead. The nature and scope of the disaster will determine what methods will be used.

COUNSELING OF SURVIVORS:

The Coroner and the MFDA Disaster Response Team will keep listings of local clergy and/or responsible persons trained in counseling with grieving survivors. These personnel will be asked to report to the waiting area of the morgue site to assist families that visit the morgue site. Phone counselors will also assist persons calling the morgue site. Efforts will be made to keep the families of the dead posted as to what is taking place and information will be released to them as best possible.

DISTRIBUTION OF THE DEAD:

Once the body has been positively identified the next of kin will be contacted with this confirmation. At this point the Coroner or MFDA Disaster Response Team personnel will coordinate the release of the body to the next of kin or their agent. All efforts will be made to cooperate with the receiving agent or family. However, the nature and scope of the disaster may require policies that may appear unfair or delayed. These policies may be necessary for the smooth flow of operations at the morgue site. All policies will be made or approved by the Coroner before implemented.

In situations where there are UNIDENTIFIED dead, the Coroner will make the decision about their disposition. Mass burial may be necessary and location of burial sites will be determined at the time. It is suggested, however, that cremation not be utilized as later identification and exhumation may be practical and necessary. Records will be kept of burial locations and body tag number will be interred with the body to make later efforts of identification easier.

TERMINATION PROCEDURES:

After the disaster clean-up operations are completed efforts will be made to return donated equipment and supplies. Cleaning and sanitizing of the morgue site will be necessary. Records compiled during the operations will be arranged in some type of systematic order and efforts will be made to preserve and store these records for future use if necessary.

MORTUARY RESOURCES:

Resource lists pertaining to mortuary services will be compiled by the County Coroner. This information will be furnished to the Phelps County Emergency Management Director who will incorporate it into the county resource file. These lists will include:

1. Funeral Service Firms - see Appendix 2 to this Annex
2. Personnel
 - a. Recovery Team personnel for locating and tagging the dead.
 - b. Evacuation Team personnel for transferring remains from disaster site to temporary morgue.
 - c. Embalmers - Funeral Directors
 - d. Orderly Team personnel to assist in all aspects at the morgue site.
 - e. Interviewers to obtain vital statistics from next of kin.
 - f. Other - Radiation Specialists, Counselors, Dentists, Pathologists, Telephone Operators
3. Equipment
 - a. Transport Vehicles - Hearses, 4-WD vehicles
 - b. Litters, cots, basket stretchers, etc.
 - c. Embalming equipment - Embalming Tables, Electric Aspirators, Hydro-Aspirators (much of this equipment will be appropriated through the MFDA disaster fund).
 - d. Other - Generators, Water Trucks, Refrigeration Trucks, Containers for capturing drainage, Linen Supplies, Body Pouches

Appendix 4 to Annex M

MEDICATION DISPENSING SITES

1. The Phelps/Maries County Health Department has identified the following sites for dispensing medications or vaccinations if required. (Sites have been identified, no contact made). One site per city will be manned.
 - a. Rolla: Lions Club Park, Rolla Middle School, Northgate Church
 - b. St. James: First Assembly of God Church, Middle School, Nelson Hart Park
2. First responders will be treated at the Lions Club, Rolla.
3. The Rolla Police Department, Missouri State Highway Patrol, and other organizations as needed, or their designee will provide security at the sites.
4. The Phelps/Maries County Health Department will obtain and provide medications as indicated to Phelps County residents.
 - a. The Health Department will maintain records of individuals treated and case follow up.
 - b. The Health Department will coordinate volunteer needs through the City of Rolla EOC

AMBULANCE DISTRICTS AND MUTUAL AID AGREEMENTS

Mutual aid & survey forms check off sheet
Mutual aid agreements on file at PCRMC

 X *Capital Region Ambulance*

 X *Dixon Ambulance*

 Ft. Leonard Wood

 X *Maries Osage Ambulance*

 Missouri Baptist Hospital Ambulance

 X *North Crawford County Ambulance*

 X *Owensville Ambulance*

 X *Pulaski County Ambulance*

 X *Salem Memorial Dist. Hospital Ambulance*

 X *Steelville Ambulance*

 X *St. James Ambulance*

 X *Texas County*

Sectors for CAD

- I** Crawford
- II** Dent
- III** Maries/Gasconade
- IV** Phelps
- V** Pulaski
- VI** Texas

