

ANNEX E

LAW ENFORCEMENT

I. PURPOSE

This annex establishes the organization and procedures to enable the City of Rolla to provide law enforcement services in the event of an emergency.

II. SITUATION AND ASSUMPTIONS

A. Situation

1. The Rolla Police Department provides law enforcement services in the City of Rolla.
2. The University of Missouri in Rolla has a police department that is responsible for law enforcement on campus.
3. Law enforcement resources that are available to support operations in the City of Rolla include the Phelps County Sheriff and Missouri State Highway Patrol Troop I located in Rolla. Other resources include: State Water Patrol, State Fire Marshal, State Conservation Agents, as well as officers from neighboring jurisdictions.
4. Municipal and county law enforcement personnel are dispatched by the Central Dispatch Center.
5. Special law enforcement facilities in the City of Rolla include the Phelps County jail which is maintained by the County Sheriff's Department. The jail is capable of holding 122 inmates. Emergency procedures for the evacuation of inmates are in place.
6. Effective mutual aid agreements exist between the law enforcement entities in and around the City of Rolla.
7. In addition to normal law enforcement procedures, law enforcement officers have special training in first aid and weather spotting. Officers will require special training in the area of hazardous materials (awareness level training recommended).

B. Assumptions

1. Situations will arise that will tax or exceed local law enforcement capabilities.
2. Outside law enforcement resources (federal, state and other local) will respond

when requested.

III. CONCEPT OF OPERATIONS

NOTE: The time frames for performing these actions are listed in parentheses.

- A. The law enforcement activities described in this annex are an extension of normal day-to-day activities and deal only with the extraordinary situations that may completely exhaust available resources and involve several jurisdictions. (See Appendix 2 to the Basic Plan.) (PREPAREDNESS, RESPONSE, and RECOVERY)
- B. The Police Chief will control operations within the City of Rolla. The Phelps County Sheriff's Department will control law enforcement operations in the unincorporated areas of the county (and in those municipalities without law enforcement capabilities). (PREPAREDNESS, RESPONSE, and RECOVERY)
- C. Emergency operations will be directed from the EOC or forward command post within the affected area. Questions concerning a lead agency in such a disaster situation will be resolved in the EOC. (PREPAREDNESS, RESPONSE, and RECOVERY)
- D. In addition to being the lead agency in certain response situations (i.e., riots, hostage situations, terrorist incidents, etc.) the law enforcement section will provide security and support in all other emergencies that threaten life and property. (PREPAREDNESS, RESPONSE, and RECOVERY)
- E. Law enforcement services will supplement warning activities in the city with mobile public address systems, sirens on vehicles and/or door-to-door. (PREPAREDNESS, RESPONSE, and RECOVERY)
- F. Local law enforcement agencies will perform law enforcement functions, as well as be used for traffic and crowd control. (PREPAREDNESS, RESPONSE, and RECOVERY)
- G. The Phelps County Sheriff is responsible for implementing and controlling any evacuation of prisoners from the jail facility. Evacuation procedures for this facility are maintained by the Sheriff's Department. (PREPAREDNESS, RESPONSE, and RECOVERY)
- H. In the event of a hazardous materials incident, the Police Department will assist the Incident Commander or the EOC staff as needed. It is recommended that law enforcement personnel receive, at a minimum, awareness level hazardous materials training. See Annex H for additional information. (PREPAREDNESS, RESPONSE, and RECOVERY)

IV. ORGANIZATION AND ASSIGNMENT OF RESPONSIBILITIES

A. Organization

A diagram of the law enforcement function is shown in Appendix 1 to this Annex.

B. Responsibilities

1. The Rolla Police Chief will be responsible for all law enforcement operations in the City of Rolla. The Law Enforcement Coordinator is responsible for the following:
 - a. Maintain law and order and support all emergencies that threaten life and property.
 - b. Provide communications and assist in the dissemination of warning to the public (mobile units).
 - c. Provide traffic and crowd control.
 - d. Provide protection/security: for critical facilities (EOC) and resources; at the disaster site (private & public property); limit access to the disaster scene and/or evacuated area.
 - e. Assist in the evacuation of disaster areas.
 - f. Provide law enforcement at special facilities (i.e., lodging and feeding facilities, and emergency shelters).
 - g. Prepare/maintain SOGs to deal with projected law enforcement requirements.
 - h. Develop/maintain agreements of understanding with nearby local law enforcement agencies to insure proper coordination.
 - i. Participate in damage assessment operations.
2. The Emergency Management Director will provide support to law enforcement as follows:
 - a. Assist with specialized training of law enforcement personnel, reserves and volunteers (i.e., weather spotting, etc.).
 - b. Develop/maintain a security pass system to allow admittance to restricted areas (EOC, disaster site, etc.).

V. **DIRECTION AND CONTROL**

- A. In emergencies whose magnitude has been "classified" (see Appendix 3 to the Basic

Plan), overall control will emanate from the EOC (Direction and Control staff). Each department, as required, will have a representative present in the EOC. The Law Enforcement Coordinator will operate from the EOC.

- B. Initial control at the incident scene will be established by the first public safety officer on the scene. The officer will maintain contact with and provide information to the prescribed communications center and will do so until relieved by a senior officer, or by a representative of an agency with a higher responsibility for the particular type of incident at hand.
- C. If outside law enforcement resources are utilized, they will maintain their normal operational control, but will be assigned missions by the appropriate law enforcement coordinator to respond as necessary.

VI. CONTINUITY OF GOVERNMENT

- A. Line of Succession - Law Enforcement Coordinator

City of Rolla

- a. Police Chief
- b. Captain
- c. Lieutenant

(According to departmental SOG)

- B. All departments will develop and/or maintain SOGs to enable them to perform their assigned duties (see Appendix 2 to the Basic Plan).
- C. All departments must be prepared to operate from an alternate EOC if the designated EOC becomes inoperable or unusable.
- D. Records and documents vital to the functioning of the law enforcement section should be duplicated and stored in another location. If this is not possible, plans should be developed to move these documents to an alternate site.

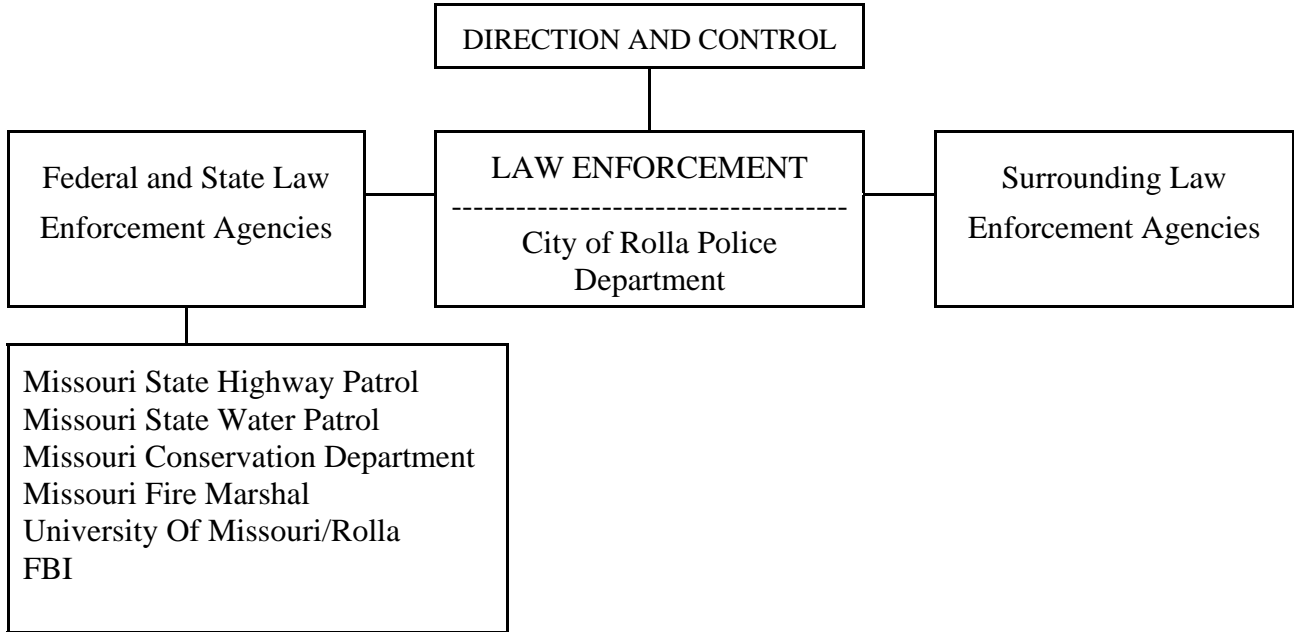
VII. ADMINISTRATION AND LOGISTICS

- A. Each law enforcement agency will develop procedures to insure a timely submission of all reports and records.
- B. Law enforcement services must provide necessary logistical support for food, emergency power, fuel, etc., for response personnel during emergency operations. The Resource and Supply Coordinator (see Annex G) will assist with supply matters.
- C. Communications equipment will be maintained by individual law enforcement agency participating in the emergency. The Communications and Warning Coordinator will provide support (see Annex B).

APPENDICES

1. Law Enforcement Diagram
2. Law Enforcement Resources
3. Rolla Police Department Responsibilities
4. Phelps County Sheriff's Department Responsibilities
5. Missouri State Highway Patrol Responsibilities
Attachment A – Missouri Emergency Operations Districts
6. Civil Disturbance SOG
7. Military Support to Civil Authorities SOG

LAW ENFORCEMENT DIAGRAM



Appendix 2 to Annex E

LAW ENFORCEMENT RESOURCES

A. Rolla Police Department
1007 North Elm St., Rolla..... 364-1213

B. Phelps County Sheriff's Department
301 West Second St., Rolla..... 364-1818
or 364-3860

C. St. James Police Department
200 North Bourbeuse St., St. James..... 265-7012

D. Newburg Police Department
30 West Second St., Newburg 762-2135

E. University of Missouri Rolla Police 341-4300

F. Missouri State Highway Patrol
General Headquarters, Jefferson City 751-3313
Troop I, Rolla..... 368-2345

G. Missouri Conservation Agent
Can be dispatched through Sheriff's Department..... see above numbers

H. Missouri State Water Patrol
Headquarters, Jefferson City..... 751-3333

I. Missouri Division of Fire Safety
State Fire Marshal, Jefferson City800-877-5688
573-751-2930

J. FBI Jefferson City Field Office 636-8814
..... Kansas City Office (24-hour) (816) 512-8200

K. Surrounding Law Enforcement Agencies (County Sheriff & Municipal Police Depts):

Maries County Sheriff 422-3381
– Belle Police Department 859-3535
– Vienna Police Department 422-3549

Gasconade County Sheriff 486-2424
– Hermann Police Department..... 486-2211

Crawford County Sheriff 775-2125

– Cuba Police Department	885-7979
– Steelville Police Department	775-2200
<u>Dent County Sheriff</u>	729-3241
– Salem Police Department.....	729-4242
<u>Texas County Sheriff</u>	(417) 967-4165
– Licking Police Department	(573) 674-2278
– Houston Police Department	(417) 967-3348
<u>Pulaski County Sheriff</u>	774-6196
– Dixon Police Department.....	759-6610
– Richland Police Department	765-4144
– St. Robert Police Department	336-4700
–Waynesville Police Department.....	774-2414

ROLLA POLICE DEPARTMENT RESPONSIBILITIES

I. PURPOSE

The purpose of this appendix is to provide supplemental information to the Emergency Management Agency Master Disaster Plan, and to outline department responsibilities and procedures to be implemented in conjunction with a major disaster.

II. ORGANIZATION

Refer to Attachment 2 of this Appendix.

III. MISSION

When a disaster occurs, we must assume that one or more of the following may occur: Considerable disruption of public order; public and private services will be interfered with; communications may be partially or totally disrupted for an indefinite period of time; dissident activities may cause damage to public and private operations and interruption procedures in an attempt to delay the community from returning to normal; and an increase in criminal activity, specifically looting, burglary, and civil disorder.

IV. CONCEPT OF OPERATIONS

- A. The magnitude and type of any disaster would dictate the necessity of a determination of the scope of said disaster in order that the necessary agencies and operations can be activated.
- B. It is highly probable that the Police Department would be the first on the scene of most disasters; and, therefore, will reflect the notification of support elements.
- C. In order to preserve public order and civil authority the Police Department may be asked to assist with and be responsible for:
 - 1. The maintenance of law and order and the protection of lives and property.
 - 2. The use of police vehicles to augment the Emergency Management siren warning system.
 - 3. Controlling and limiting access to the scene of a disaster or civil disorder.
 - 4. The preliminary assessment of disaster area through use of information, charts, maps, etc.

5. Traffic control.
6. Security for vital installations and facilities.
7. The enforcement of curfew.
8. Coordination with state and national law enforcement agencies.
9. Requesting aid from area law enforcement
10. The issuance of passes to restricted areas.
11. Direction of the civilian population to areas of public assistance.
12. Mobile support operations.
13. Direction of auxiliary support units.
14. Supplying security in reception centers, lodging, and feeding facilities, and emergency shelters.

D. Alerting Conditions and Corresponding Actions

As outlined in the Police Department Special Order (Appendix 4, Annex B) an orderly, progressive alerting system has been established for the commitment of personnel and equipment. Escalation of preparedness measures will be ordered by predesignated commanders based on an evaluation of current conditions and resource needs.

V. EXECUTION

In the event of an emergency or natural disaster, operations will be conducted under the direction of the Chief of Police or his designated alternate in accordance with the Emergency Operations Procedures, Rolla Police Department Special Order and other applicable directives.

A. Police Department plans call for establishing a command and operations structure responsible to the Headquarters Command Post.

1. All decision making personnel and support staff will report to the Chief of Police to assume responsibility for all emergency efforts.

B. Field operations will be directed from a command post located at the site of the disaster. The field commander shall be responsible for the direction of operations at the scene of the disaster and his operating headquarters will be the Command Post.

All information concerning the operations shall be transmitted to the Command Post which shall be transmitted to the control center for the entire operation and all other agencies, departments, and utilities shall work from this center.

It shall be the duty of all officers in the field to keep the Command Post continually informed of conditions, and the Communications Officer at the Command Post shall keep the Communications Center continually informed of conditions at the disaster site.

In all likelihood, the Sergeant will be one of the first of the initial emergency response personnel who arrive on the scene. By virtue of this, he will inherit the major portion of the responsibility for ensuring that the proper groundwork for an effective operation is initiated. He shall be responsible for:

1. Securing aid for the injured.
2. Providing for immediate security needs for the affected area.
3. Taking the necessary action(s) to effectively control the situation as dictated by the circumstances at the time.
4. Command of all police personnel on the scene and/or assigned to the area involving the disaster until the arrival of the Command or his designated alternate.
5. Assignment of personnel as Communications Officer for the operations. In the event it is necessary to change the communications officer, it will be the responsibility of the commander of the Command Post to notify the Telecommunicator inasmuch as they will receive orders only from the officer appointed as the communications officer.
6. Assignment of personnel as the traffic control officer for the operation.
7. Notification of those emergency support services that are required on the scene. (i.e., public utilities, associated agencies, other city government departments)
8. Deployment of response officers.

It will be the responsibility of the Commander of the Disaster Command Post to decide what action, if any, is required. Upon arrival of the commander, the field sergeant will immediately inform the commander of all action taken prior to his arrival.

All orders to personnel on the scene are to clear through the field commander so that he may retain control of the situation, except when an emergency precludes such action.

C. Notification Responsibilities

The on-scene commander is responsible for notification of:

1. Ambulance;
2. Fire Department;
3. Additional police units for communications and traffic control;
4. Sheriff's Patrol (additional security and traffic control personnel);
5. Public Works for barricades and heavy equipment;
6. Gas Service Company;
7. Water Company;
8. Electricity Company, and
9. Telephone Service Providers, through the Communications Center.

In addition to the other duties at the scene, the on-scene commander must:

1. Establish an on-site command post in the most expeditious manner within the following perimeters:
 - a. Site location to accommodate a telephone terminal hook-up if possible.
 - b. Provisions for a staging area for incoming equipment and personnel.
 - c. Effective radio transmission area.
 - d. In proximity to the disaster scene, but distant enough to allow for the free movement of personnel and equipment in and out of the area without interfering with the rescue operations.
2. Direct emergency response personnel to the appropriate areas where they are needed.
3. Determine the locations where stationary barricades and vehicle roadblocks will be required.

4. Maintain a written narrative log of what occurs.
5. Maintain contact with and provide information to the media liaison person on the scene.
6. Provide a location at the site of the disaster for ambulance parking.

Each agency who responds to the scene will have a contact person who will report to the Command Post upon their arrival to receive direction and details from the on-scene commander on the disaster. (This applies only to the initial response. Some agencies will have vehicles entering and leaving the area several times).

Each agency has their own individual responsibilities and plan which they will implement after their contact person has received the details of the situation from the Command Post.

The Communications Officer will:

The Communications Officer is a key link in the chain of a successful operation. It is through this officer that all information to and from the scene of the operation flows for dissemination to the appropriate authority. The purpose of the communications officer is to reduce the inevitable duplication of effort and hold to a minimum, the confusion level throughout the system. It is imperative that the communications officer be the officer on the scene who handles the flow of information to and from the initial notifications. Therefore, any officer or supervisor who deems it necessary to relay or request information from the telecommunicator or higher authority is required to channel such relay or request through this officer. He shall be responsible for:

1. Designating a vehicle for the purpose of establishing contact with the Communications Center until the arrival of the Mobile Command Post.
2. Establishing contact with the Communications Center and identifying himself as the communications officer on the scene to the Telecommunicator.
3. Locating the communications vehicle at the on-site command post. (When the Mobile Command Post is not utilized).
4. Maintain radio contact with the Communications Center and keep them advised of activities at the involved area.
5. Maintain radio contact with other police department elements on the scene and/or assigned to the disaster area.
6. Relaying all information received to the Commander or his designated alternate on the scene.
7. Transmitting information as ordered by the Commander to the Communications

Center for upward dissemination.

ALL INFORMATION RELATIVE TO THE DISASTER AREA FROM AND THE COMMAND POST BY POLICE UNITS ON THE SCENE OF THE DISASTER OR ASSIGNED TO SUCH DISASTER SHALL BE ON THE PRIMARY POLICE RADIO FREQUENCY. THE DECISION TO MOVE FROM PRIMARY FREQUENCY TO MUTUAL AID FREQUENCY MAY BE MADE BY THE ON-SITE COMMANDER.

E. The Traffic Control Officer will:

The traffic control officer at the direction of the QIC bears the responsibility for the smooth uninterrupted flow of motor vehicles and pedestrian traffic into, out of, and around the involved area. He shall be responsible for:

1. Sealing off the involved area.
2. Directing incoming personnel and equipment to the appropriate location within the involved area.
3. Establishing security on vehicles and equipment.
4. Notifying the on-scene commander of actions taken.
5. The control of official and civilian traffic into, out of, and around the involved area.
6. Determining the number of personnel and type of equipment required for effective traffic control.
7. The location and type of roadblock equipment, when necessary.
8. Requesting equipment and personnel through channels and assignment of such equipment and personnel as needed for traffic control.

F. Commander

1. The Police Commander or his designated alternate will be in command of the

- entire police operation in the affected area.
2. It shall be the Commander who shall make the determination as to what police action is required in the involved area.
 3. The Commander shall be responsible for the relay of information upward through the department chain of command to the Chief of Police and other appropriate police department authority.
 4. The Commander shall station himself at the on-site Police Command Post and direct all police activities at the involved site.
 5. The Commander will ensure the relay of vital information to the Commander of Patrol Operations through the on-site Communications Officer.

G. Call-up Procedure

Each commanding officer or supervisor who is responsible for notifying subordinates under his command will, upon conclusion of his contacts, advise the Chief of Police as to the number of men responding to the scene.

1. All department personnel will be under a general call-up order.
2. All days off and leave time are automatically cancelled for the duration of emergency conditions.
3. All personnel called from off-duty will report to the patrol supervisor in command at police headquarters.
4. The call-up of commissioned and reserve officers will be by designated personnel on orders of the Chief of Police or his designated alternate.
5. Personnel will report for duty in the uniform of the day.

H. Assignment of Personnel

1. The manpower needs will be assessed by the Commander on the scene of the disaster. The Commander or his immediate subordinate will assign personnel as needed and available for:
 - a. Care of the injured.
 - b. Establishing security and sealing off the area.
 - c. Traffic control in and around the affected area.

- d. Implement immediate measure to control looting and acts of civil disobedience.
2. All personnel assigned to the scene of the disaster will remain at their assigned post until relieved, either by order, relief personnel, or termination of the operation. Department personnel may expect to work 12 hour shifts.
3. The Mobile Command Post when utilized shall be positioned at the site (near the affected area) that will accommodate:
 - a. Telephone terminal hook-up.
 - b. Staging area for incoming equipment.
 - c. Radio contact to be maintained between the command post and staging area for effective dispersal of personnel and equipment as determined by need
 - d. The command post shall be positioned in proximity to the disaster area, but far enough away to not hamper the free movement of personnel and equipment into the area. It shall be manned by the commander or field sergeant and sufficient personnel to facilitate the flow of information and services needed.
 - e. The patrol supervisor at headquarters will assume responsibility for police operations in the communications center to assure that all police related orders and requests are handled on a priority basis.
 - f. Frequency designation will be made by on-site commander.
 - g. All telephone calls concerning the disaster will be routed to the. Duty Officer/Supervisor.
 - h. Personnel assigned to the Detective Division will remain available for assignment as needed.
 - i. The commander will evaluate any occurrence which may require the activation of specialized units and make final determination on the activation of such units.
 - j. If activated, special units will report to the command post for assignment of their teams, personnel assigned to these units will report directly to their commanders at the staging area.

- k. In the event of an impending disaster, all district and traffic units not actively engaged in call response or other necessary activity will move slowly through their assigned areas with their sirens on high-low or alternating to alert the community of the imminent danger. This alert activity will continue until the all clear is broadcast by communications, or the disaster occurs, or the officer receives another assignment requiring immediate response. In the event that the department base communication system is damaged or for any other reason rendered inoperable, communications will be handled by mobile and handheld portable radio units.
- 4. Disasters occurring out of the city limits, but within the county will be handled by the Phelps County Sheriff's Department.
 - a. The Rolla Police Department will provide support personnel.
 - b. The Commander will determine the number of personnel assigned to this duty. Personnel assigned will be under the command of the County Sheriff.
- 5. A Red Cross Flag or an official American Red Cross vehicle authorization card displayed on the windshield will identify civilians who have the right or need to be in the area (residents, etc.) and will be issued at the command post by the officer in charge. (Provided by the American Red Cross).

PHELPS COUNTY SHERIFF DEPARTMENT RESPONSIBILITIES

I. PURPOSE

The purpose of this annex is to set forth guidelines for operations to be utilized by the Sheriff's Department during a major emergency situation.

II. ORGANIZATION

Refer to Attachment 1 of this Appendix.

III. MISSION

To coordinate Phelps County emergency personnel; to utilize the resources of the county in the most effective manner; to save lives, alleviate suffering, minimize property and damage; and restore essential public facilities.

IV. CONCEPT OF OPERATION

The Phelps County Sheriff's Department will provide personnel and related equipment as support in the event of a disaster occurring within the city limits. The Police Department Commander will determine if the Sheriff's Department assistance is needed and make a formal request, through channels for such personnel. Personnel will be assigned by the Sheriff and those assigned will be under the command of the Commander of Patrol Operations of the Rolla Police Department.

V. EXECUTION

The execution phase of this plan will be accomplished through the Phelps County Sheriff's Department normal chain of command in conjunction with the Rolla Police Department.

VI. TASK

- A. Upon notification that the disaster operations plan is to become operational, the Phelps County Sheriff's Department will initiate the following:
 - 1. Support the Rolla Police Department with traffic control and physical security measures and in any other way possible.

MISSOURI STATE HIGHWAY PATROL RESPONSIBILITIES

I. PURPOSE

The purpose of this annex is to set forth guidelines and establish an operational plan to be used by the Missouri State Highway Patrol to support the City of Rolla during a major emergency situation.

II. ORGANIZATION

III. MISSION

To coordinate efforts with the Rolla Police Department and assist with personnel and equipment as required and when necessary.

IV. CONCEPT OF OPERATION

The Missouri State Highway Patrol, Troop I, Rolla, will provide personnel and related equipment in support to the Rolla Disaster Plan in the event a disaster should occur within the Rolla city limits. The Police Commander at the Disaster Command Post will determine if assistance is needed from Troop I. In the event Patrol assistance is needed, the Troop I Commander will assign a Liaison Officer to the Disaster Command Post for the purpose of coordinating Patrol operations with the Police Commander.

V. EXECUTION

The execution phase of this plan will be accomplished through the Missouri State Highway Patrol's normal chain of command in conjunction with the Rolla Police Department.

VI. TASK

- A. Upon notification that the disaster operations plan is to become operational, the Missouri State Highway Patrol will initiate the following:
 1. Support the Rolla Police Department with traffic control and physical security measures, and any other way possible and to provide any special equipment needed.
 2. The Police Commander will assign the Highway Patrol with a specific area of responsibility, if at all possible. The Patrol support operation will be coordinated between the Police Commander and the Highway Patrol Liaison Officer assigned to the Disaster Command Post. The Highway Patrol will

provide radio communications for the Patrol Personnel assigned to the operation.

CIVIL DISTURBANCE SOG

I. PURPOSE

The Rolla Police Department will provide civil disturbance control measures for the City of Rolla. The Police Department will coordinate emergency operations, utilizing available city resources to save lives, protect property, restore order, and preserve peace in the event of civil disturbance.

II. ASSUMPTIONS

Conditions arising from a civil disturbance should require the activation of the Emergency Operating Procedures within the Communications Center and/or Command Post to direct and coordinate emergency response personnel.

III. EXECUTION

A. The Mayor has the overall responsibility for actions taken to control civil disturbances within the corporate limits of the city, including demonstrations and unlawful acts ranging from passive resistance to mass insurrection.

B. The Chief of Police will assume control of all civil disturbance operations and will prescribe responsibilities and operational procedures for participating city departments and other agencies with the approval of the Mayor.

C. The plan will consist of two phases.

Phase I - Notification of an imminent or active civil disturbance of nonviolent nature. Phase I is designed to handle a partial commitment of personnel and equipment resources to cope with the situation or to prepare the organization for phase II alert.

Phase II - When the situation is serious in nature or escalates to a critical level too rapidly for the personnel originally committed to control, Phase II shall be implemented.

D. The execution of this plan will be upon direct orders of the Chief of Police or designated police command officer.

E. Operational control and direction will be retained at normal locations under Phase I with the Communications Center on a standby status.

F. Operational control and direction under Phase II will be from the Communications

Center. The Emergency Operations procedures of the Communications Center will be activated by order of the Chief of Police for direction and control of support agencies and coordination of efforts. Full mobilization of support services will be initiated.

G. The Police Department will maintain operational control throughout the time frame of the emergency, assigning specific tasks for support agencies; however, support agencies will operate within their own chain of command.

H. Should the situation warrant, a Field Command Post will be established at a point near the disturbance area. When assistance of other law enforcement agencies is requested, a liaison officer from the authority will report to the Communications Center and/or Field Command Post.

IV. TASK

A. Police Department

1. Initiate Phase I of this plan and notify the Mayor.
2. Provide warning to the public of any potentially dangerous situation.
3. Control access to and looting of damaged or evacuated areas in the city.
4. Direct all supporting forces deployed at the site of the incident.
5. Secure critical facilities as coordinated with agencies concerned and as the situation warrants.
6. Control incidents of vandalism, arson, sabotage, and sniping.
7. Collect and disseminate intelligence and information on a need to know basis.
8. Establish holding areas for processing of arrestees.
9. Maintain liaison with state, county, and other local law enforcement agencies.
10. Provide liaison personnel to other agencies as required.
11. Advise the Mayor when Phase II should be initiated.
12. Provide security for the personnel and equipment of supporting units.
13. Implement security procedures for water treatment plants, pumping stations, reservoirs, electrical substations, and other vital public utilities when required.

B. The Public Works Department

1. Provide a knowledgeable representative to the Communications Center.
2. Provide barricades for population control.
3. Remove barricades erected by dissidents.
4. Conduct debris clearance service.
5. Supplement transportation resources as required for emergency personnel.
6. Provide assessment of damage and emergency repairs to city property.
7. Assist in traffic control and evacuation.

C. The City Attorney will advise on legal matters relative to civil disturbances.

D. The Fire Department

1. Receive clearance from the Police Department before entering areas affected by disturbances.
2. Coordinate fire suppression strategy with the Police Commander.
3. Be prepared for special assignments in support of police operations.

E. Other City Department

1. Provide a knowledgeable person to the Communications Center and/or Command Post if necessary.

F. Notify Coroner if a fatality is found.

G. The American Red Cross

1. Establish reception centers, provide temporary shelters, food, and clothing for victims.

H. Communications

1. Support forces will provide their own communication system and maintain radio contact with the Communications Center.
2. "Call-up Roster" will be maintained by each department and will be updated as required to reflect current information.

IV. DIRECTION AND CONTROL

1. The Police Department will maintain direction and control of field operations, subject to approval of the Mayor.
2. Support services will be under the command of their respective departments chain of command, but will receive direction from the Rolla Police Department, subject to the approval of the Mayor.

MILITARY SUPPORT TO CIVIL AUTHORITIES SOG

I. PURPOSE

This standard operating guideline prescribes the policies, procedures and guidelines for Missouri National Guard Units called to State Emergency Duty. They apply during periods of state emergency, civil disturbances, natural disaster, and man caused disasters, as applicable.

- A. Request for National Guard support will be submitted in writing to the Governor by the Civil Official requiring assistance. In case of extreme urgency requests may be made by the most expeditious means available and later confirmed in writing.
- B. The Adjutant General, acting under the direction of the Governor will publish the appropriate General Orders.
 - 1. When units or individuals of the Missouri National Guard are ordered to State Emergency duty in support to civil authorities, the orders will specify the general or specific missions and the local civil officer, such as the Mayor, Chief of Police, or other official to whom the National Guard Commander will report for direction and to receive the mission to be accomplished.
 - 2. Command, operational control, and accomplishment of the mission is the responsibility of the National Guard Task Force Commander. Civil authorities remain responsible for the general maintenance of law and order, and any other activities that may be required due to the emergency. Under these conditions, National Guard Units and their personnel, are considered to be "IN SUPPORT OF CIVIL AUTHORITIES".
- C. Military Chain of Command: During periods of State Emergency Duty, the Chain of Command will be as follows:
 - 1. Governor
 - 2. State Adjutant General (TAGMO)
 - 3. Commander, Task Force Commander
 - 4. Company Task Force Commander
 - 5. Platoon & Squad Leaders
- D. Authority of National Guard Commanders

Commanders are responsible only to their superiors within the National Guard Chain of Command. When acting in support of civil authority the commander or commanders will accept missions from the appropriate civil authorities and execute those missions utilizing the methods and resources they deem necessary.

- E. Authority of Civil Officials

The maintenance of Law and Order, functions of government agencies, and services within a political subdivision are responsibilities of the local duty elected or appointed civil authorities. When National Guard forces are ordered by the Governor to provide Military Support to those civil authorities those National Guard Forces will obey and execute that order with the understanding that they are assisting local civil authorities in the performance and accomplishment of their duties and functions. Civil officials are, and will remain, IN CHARGE and will continue to exercise the normal functions of their particular office.

F. The Adjutant General's Liaison Group

Selected personnel assigned to the State Headquarters Detachment will form a liaison group to each Senior Task Force called to State Emergency Duty. This Group will be correlated within the Senior Task Force Headquarters and will provide the following:

1. Receive all reports.
2. Representation of TAGMo.
3. Public information services.
4. Logistical support and advice.
5. Legal interpretations.
6. Receive recommendations to TAGMo.
7. Evaluation of Military Requirements.
8. Command and control upon direction of TAGMo.